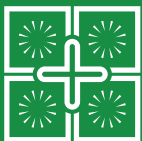




FOR INTERNAL
AND EXTERNAL USE



FASTER INSTALLATION



FASTER INSTALLATION
WITH LESS MANPOWER

TILEGLUE 4.0+

TECHNICAL DATA SHEET

DEC 2022



SIMPLE AND MASON
FRIENDLY MATERIAL



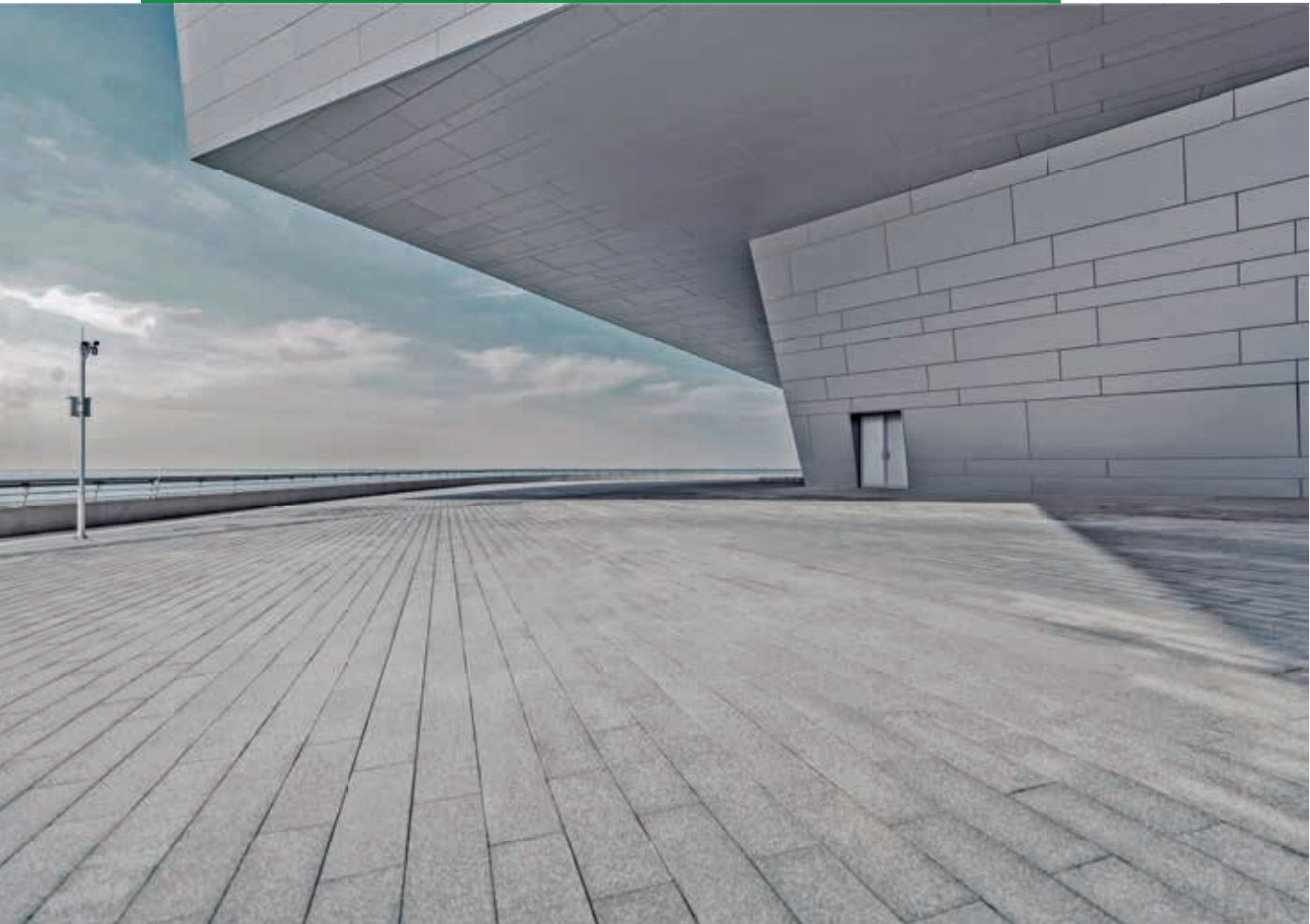
BETTER COVERAGE



ECONOMICAL



**TRUSTED BY
THE BEST**



MULTIFUNCTIONAL HIGHLY POLYMER MODIFIED AND HIGH PERFORMANCE AND FLEXIBLE SINGLE COMPONENT CEMENTITIOUS ADHESIVE WITH EXTENDED OPEN TIME AND NO VERTICAL SLIP FOR THE INSTALLATION OF LARGE FORMAT TILES, SLIM, TILES, NATURAL STONE AND ENGINEERED STONES IN THE INTERIOR AND EXTERIOR FLOOR & WALL APPLICATIONS WITH A MAXIMUM BED THICKNESS OF 12MM





FEATURES AND BENEFITS

1. High strength, highly Polymer modified
2. Extended open time and good workability
3. Suitable for Interior and exterior floor and wall applications
4. Suitable for wet area applications like swimming pools, washrooms, water bodies and sauna
5. Bonds to various substrates
6. Water and shock resistance
7. Good impact resistance
8. Ready to use, consistent quality. Just mix with specified water ratio
9. Self-curing – No curing required, enriched with water retention technology
10. Faster installation with less man power – saves times and labour
11. Simple and mason friendly material
12. Anti-Slip properties for vertical applications
13. Easy mixing, smooth application and better workability & its properties



INSTALLATION TYPES

Substrates, Type of stone/tile, area of installation and type of installation:

1. MIVAN/Shear Walls
2. Trimix concrete and VDF concrete
3. Concrete
4. Concrete Masonry
5. Cement Mortar Beds
6. Cement Plaster
7. Existing Ceramic*, Vitrified* tiles and Natural stones*
8. Cement Backer boards, Calcium Silicate Boards and Gypsum Wallboards
9. Swimming pools, Washrooms and any other wet areas
10. Water proofing membranes
11. Light weight blocks

*The existing system should be roughed and cleaned before installation of tiles and stones



CERTIFICATION

1. EN 12004 – C2TE S1
2. IS 15477:2019 – Type 3T S1
3. ANSI 118.4 TE S1

Coverage

Approximately 55-60 sft per 20kg bag with 6mm*6mm square notched trowel.

*Coverage will depend on the trowel notch size, evenness and smoothness of the substrate, type and size of tile and weather conditions.



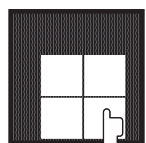
APPLICATION PROCEDURE

Surface Preparation: All the surfaces should be clean, dry, free from dust, oil, grease, loose bonded particles, peeling paints, concrete sealers and structurally sound. The surface should be true to the plumb. Uneven or rough surfaces should be made even and smooth with FC PLASTWELL/FC READYSCREED to provide a better flat finish. Dampen the dry, dusty concrete/masonry and surfaces heated from exposure to sunlight with water, sweep off the excess water if any. Allow 28 days for walls and floor surfaces to cure prior to tiling. Existing tiles must be roughed and cleaned.



MIXING PROCEDURE

Mixing: Take 6-6.25L of clean, potable water per 20kg of **TILEGLUE 4.0+** adhesive into a clean mixing bowl. Add adhesive powder into the mixing bowl and mix the material by hand or with a slow speed mixer until a smooth, lump-free paste is obtained. Allow the adhesive to slake for 5 minutes. Adjust the consistency of the material accordingly if necessary, but make sure that the water used is within the recommended range. Remix the adhesive prior to the application and apply with the proper sized notch trowel. The paste should be kept away from direct sunlight and heat.



INSTALLATION PROCEDURE

Apply a thin layer of **FC TILEGLUE 4.0+** adhesive to the substrate using the straight edge of the trowel. Place the material over the applied thin layer and comb the adhesive with notch side of the trowel. Spread as much adhesive as can be covered with tile in 15 minutes. If the tile/stone size is 2*2', back buttering is mandatory to provide full bedding and firm support. It is recommended to use the proper sized notch trowel to ensure the full bedding of the tile/

stone. Place the tile over the applied wet and sticky adhesive and beat it using rubber hammer or mallet to install it under a firm pressure to ensure a good coverage of the adhesive. Periodically, check the adhesive transfer on the back side of the tile by removing the tile. If the adhesive is dried/not sticky (skinned over), remove and replace with fresh material. It is recommended to provide a minimum of 3mm grout joint around the tiles while fixing the tiles.



TECHNICAL DATA

Product	:	FC TILEGLUE 4.0+
Color	:	Grey/White
Pack Size	:	20 KG (Powder)

Application Data at 25±2°C & 60±5% RH

Open Time in minutes*	:	35 Minutes
Adjustable Time in Minutes	:	30 Minutes
Pot Life in hours	:	3 – 4 Hours
Time to light foot traffic	:	16-24 Hours
Application Temperature	:	+5°C to +40°C

*Open time may vary depending up on the site and atmospheric conditions

EN 12004 C2TE S1

TEST PARAMETER	STANDARD REQUIREMENT	PRODUCT PERFORMANCE
Open Time (EN 1346)	≥0.50 N/mm ²	0.90 – 1.00
Slip Resistance (EN 1308)	≤0.50 mm	0.20 – 0.30
Deformability	>2.5 mm	2.8 – 3.0

Tensile Adhesion Strength in N/mm²

Air Curing EN 1348; Cl 8.2	≥1.00 N/mm ²	1.60 – 1.80
Water Curing EN 1348; Cl 8.3	≥1.00 N/mm ²	1.40 – 1.60
Heat Curing EN 1348; Cl 8.4	≥1.00 N/mm ²	1.20 – 1.40
Freeze-thaw EN 1348; Cl 8.5	≥1.00 N/mm ²	1.40 – 1.60

IS 15477:2019 – Type 3/T

Tensile Adhesion Strength in N/mm²

Dry Condition	≥1.50 N/mm ²	1.60 – 1.80
Wet Condition	≥1.00 N/mm ²	1.40 – 1.60

Shear Adhesion Strength in N/mm²

Dry Condition	≥1.50 N/mm ²	2.00 – 2.20
Heat Ageing Condition	≥1.00 N/mm ²	1.80 – 2.00
Wet Condition	≥1.00 N/mm ²	1.90 – 2.10

Slip Resistance

Slip Resistance Annex E (Clause 5.5)	≤0.50 mm	0.20 – 0.30
--------------------------------------	----------	-------------



PRECAUTIONS

Although **FC TILEGLUE 4.0+** is non-hazardous material, as it contains Portland Cement one should take the following precautions should be taken:

- It is recommended to use the N95 nose mask, gloves and goggles while handling the material
- Keep out of reach of the children
- In case of contact with eyes, rinse your eyes with plenty of water and consult a doctor immediately

For further and complete information about our product's safe use, please refer to the latest version of our material safety data sheet.



LIMITATIONS

- For laying tiles on floor, surface should be structurally sound (28 days curing) & good condition
- Always add powder to water & never add water to powder
- Do not add excess water than recommended
- Never add sand & cement to the mix at site
- Do not use for vertical cladding of heavy stone & tiles



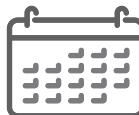
GROUTING

Grouting can be done after 24 hours of installation for best results.



CLEANING

The tools and containers should be cleaned with plenty of water while the adhesive is still fresh. The surfaces should be cleaned with a damp cloth before the adhesive dries.



SHELF LIFE

12 months from the date of manufacturing in the original unopened manufacturer's packaging.



STORAGE

Store in dry place away from the moisture



CUSTOMER CARE

For any suggestion or concerns, please mail to **reachus@firstchoicereadymix.in**.

For any other product related queries please contact **1800 202 5567**

Disclaimer

Information given in the data sheet is only a guideline for usage. Users are advised to undertake trial for product suitability prior to its full scale usage. There is no implies guaranty/warranty for the results and the company is not liable for any consequential damages.



Scan the QR code to know more
about our other products



Manufacturer Details: A product of



MANUFACTURED AND PACKED AT:

- **BIHAR** - PATNA • **JHARKHAND** - JAMSHEDPUR • **ODISHA** - BHUBANESWAR
- **TELANGANA** - HYDERABAD • **WEST BENGAL** - KOLKATA, BARDHAMAN, JALPAIGURI